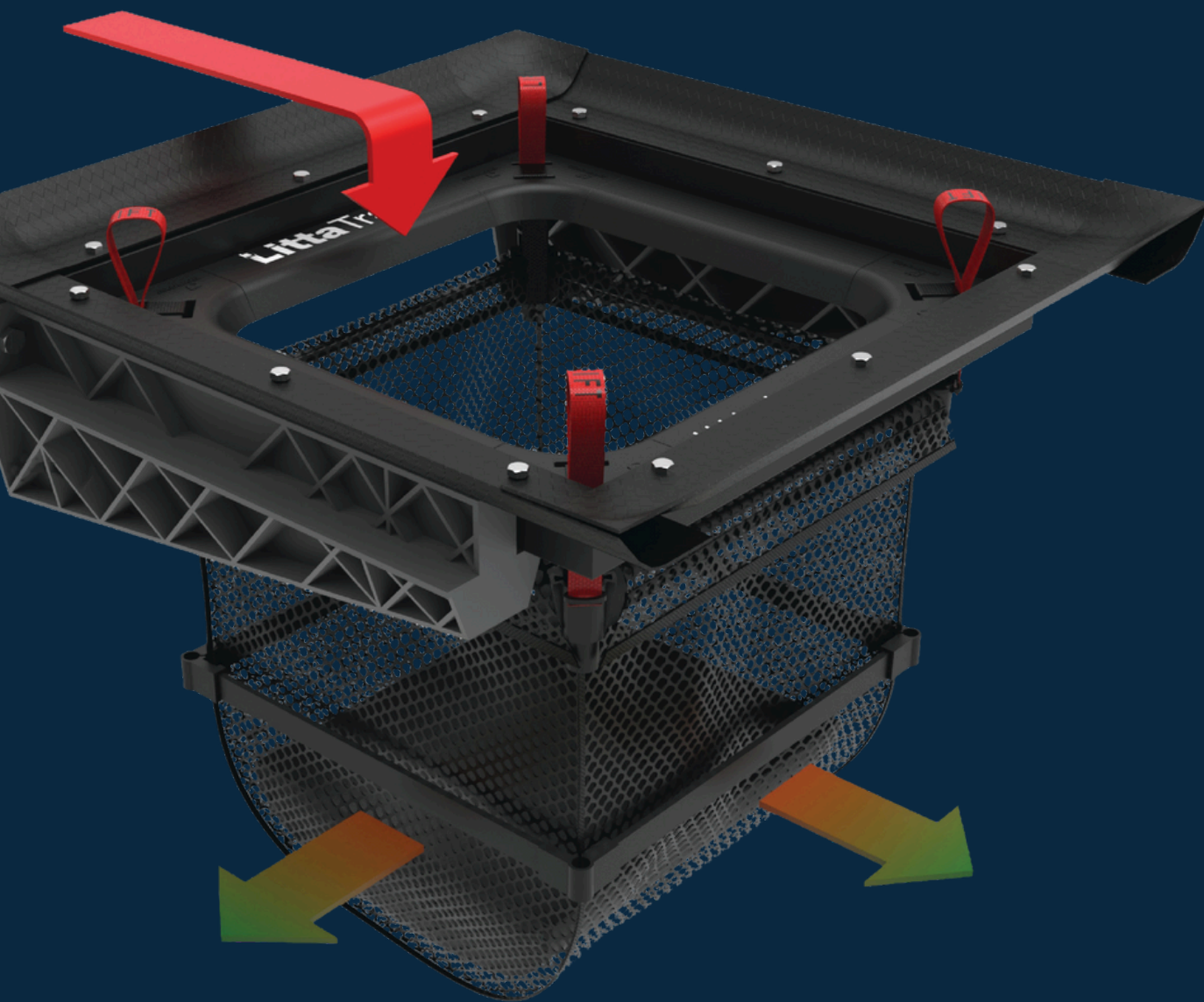


LittaTrap™



Maintenance Guide

Inspection and Maintenance Procedures

HEALTH AND SAFETY:

We recommend that owners check and utilize any applicable State and local regulatory requirements for applying a Site-Specific Safety Plan before undertaking any installation, inspection, or maintenance service. Personal Protection Equipment (PPE) is required when installing, inspecting, or maintaining a LittaTrap™. Field personnel shall utilize personal protection equipment (PPE) as required, including gloves, long sleeve shirts or outwear, long pants, Hi-Viz clothing, as well as steel-toe shoes. For additional advice on the relevant health and safety requirements, we recommend that you consult the local health and safety regulator.

INSPECTIONS:

All stormwater inlet filter devices require routine inspection and maintenance service to ensure continued functionality of the device as well as identify and remove trapped contaminants and to minimize bypass. Due to the variable nature of stormwater pollution, annual rainfall characteristics and localized site pollutant loadings, maintenance service frequencies can vary for any catch basin location.



Figure 4: LittaTrap seen with 1mm liner installed to target micro-plastics such as plastic pellets. Hand maintenance shown.

It is recommended to inspect the LittaTrap™ at least four times per year during the first year of operation to determine seasonal and annual maintenance requirements. First year inspection service frequency is recommended by conducting one inspection visit for every three months after a LittaTrap™ Inlet Filter device is installed and is placed in operation. However, if there is a presence of a high potential loading activity within the drainage area, it's recommended that the catch basin inspection frequency be revised. High loading activity in the upstream drainage area may include the following:

- A high number of trees or vegetation.
- Construction activity.
- Uncovered or unsealed roadways

Additional inspections are recommended after major storm events. The LittaTrap™ should be inspected after a major storm event to check for any unforeseen damage or to find evidence of illicit discharge.

MAINTENANCE FREQUENCY

Maintenance of the LittaTrap™ is recommended when more than 75% of the maximum trash capture volume of the LittaTrap™ model size installed. Maintenance frequency is typically conducted 1 or 2 times per year, depending on pollutant load conditions within a particular drainage area. If applicable, maintenance frequency shall be conducted as per any local municipal or State stormwater permit requirements.

MAINTENANCE PROCEDURES

The LittaTrap™ maintenance service involves two activities. These activities are as follows:

1. Routine removal and emptying of the gross pollutant basket and liner (if used); and
2. Inspection for any structural damage or flow impedence.

The recommended maintenance procedure for grate (drop) inlets or combination grate/curb inlet catch basins is for the end-user or maintenance service contractor.

to conduct maintenance service by “hand” to reduce operational cost. Each LittaTrap™ basket is fitted with lifting handles on four sides of the basket, so that maintenance personnel will have no personal contact with the captured and retained pollutants.

Also, we recommend the use of a vacuum induction truck (ie; vactor truck or heavy industrial vacuum equipment) for the maintenance of curb entry catch basin LittaTrap™ inlet filter devices.



Figure 5: LittaTrap™ Hand Maintenance

LittaTrap™ Hand Maintenance

It is recommended that the LittaTrap™ basket and liner be emptied when 75% Full. To empty the LittaTrap™, it is a simple one-minute exercise “Lift, Tip, Replace”.

The following steps detail hand maintenance:

1. Establish a safe working area per typical catch basin service activity.
2. Remove grate/access cover.
3. Remove the basket and liner with two lifting hooks or lift by hand through the loops on the top of the basket. Excess debris should be scooped out first if the basket is over half full.
4. Pour the contents of the basket and liner into a disposal container.
5. Replace grate.



Figure 6: LittaTrap™ Vactor Maintenance

LittaTrap™ Vactor Maintenance

The steps for induction maintenance are detailed below:

1. Establish a safe working area per typical catch pit service activity.
2. Remove grate/access cover.
3. Vacuum accumulated debris from the basket.
4. Vacuum contents from the base of the catch basin (if required).
5. Inspect basket, filter box, and seals for any damage.
6. Replace grate/access cover.